



# HURREVAC

**ACCOUNT REGISTRATION**  
[www.hurrevac.com/register](http://www.hurrevac.com/register)

**WEB-BASED HURREVAC**  
[hvx.hurrevac.com](http://hvx.hurrevac.com)

## HURREVAC FEATURES



Use any computer, operating system, tablet or smart phone – No software installation necessary (cloud-based)



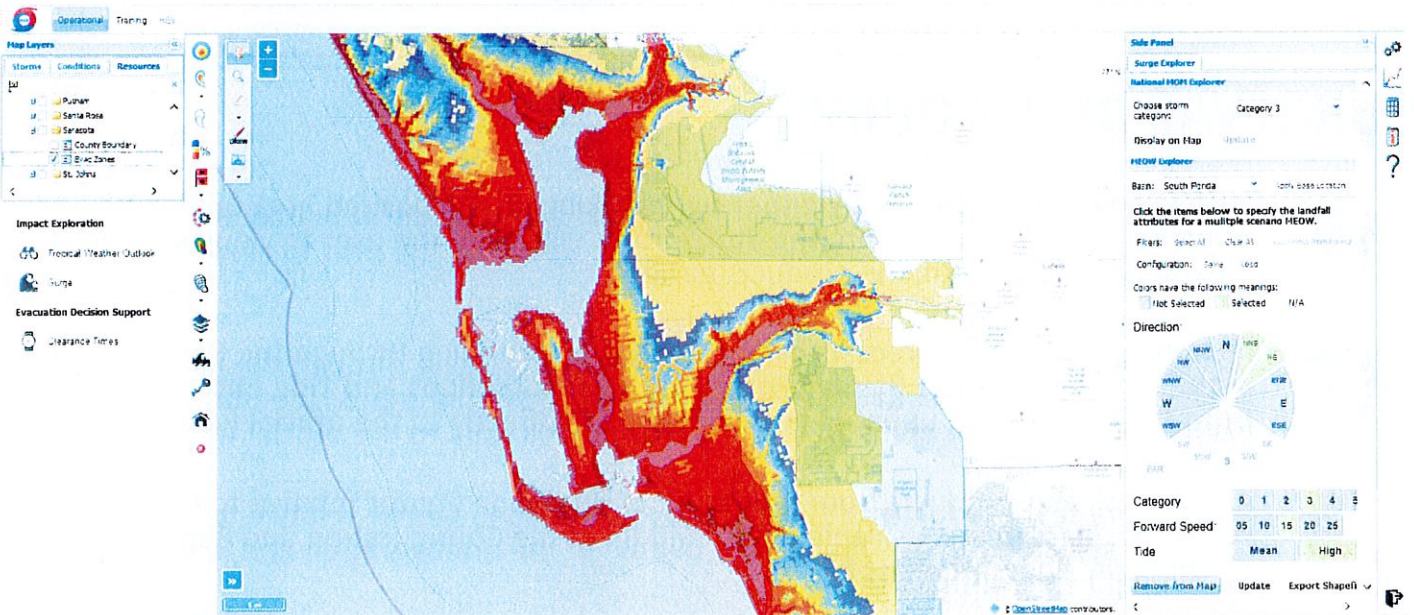
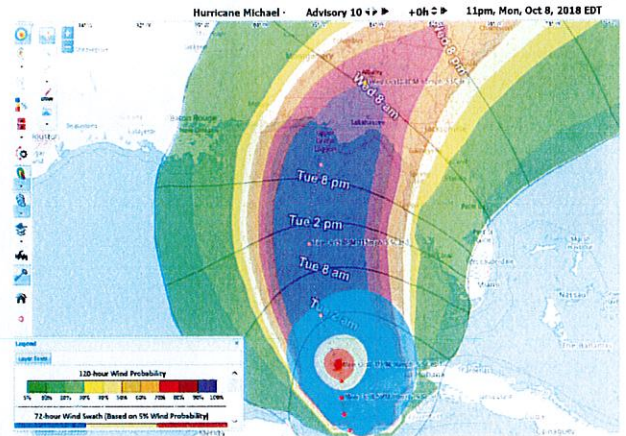
Hurricane Evacuation Study (HES) zones, clearance times, and technical docs all accessible within the app



Built-in training support modules



Storm surge products at your fingertips: *MOMs, MEOWs and real-time Surge products*



HURREVAC is the decision support tool of the National Hurricane Program, administered by FEMA, the USACE, and the NOAA National Hurricane Center. Access for government emergency managers is free. Questions, comments and feedback should be directed to [support@hurrevac.com](mailto:support@hurrevac.com)



# HURREVAC

User Name: \_\_\_\_\_

Password hint: \_\_\_\_\_

Storm Tools    Map Tools    Storm Status    Configuration & Reports

HVX Mode Selection →

Storms, Conditions, & Resources →

Decision Support Panel →

**Hurricane Michael - Advisory 9**    +0h    Spm, Mon, Oct 8, 2018 EDT

Location Type	Time	State	County	Time Start	SSS Start	Time End	SSS End
County	FL	Bay	10/08 10am	10/08 10am	10/08 10am	10/08 10am	10/08 10am
County	FL	Collier	10/08 5pm	10/08 5pm	10/08 5pm	10/08 5pm	10/08 5pm
County	FL	Dade	10/08 5pm	10/08 5pm	10/08 5pm	10/08 5pm	10/08 5pm
County	FL	Escambia	10/08 4am	10/08 4am	10/08 4am	10/08 4am	10/08 4am
County	FL	Franklin	10/08 5am	10/08 5am	10/08 5am	10/08 5am	10/08 5am
County	FL	Gadsden	10/08 5am	10/08 5am	10/08 5am	10/08 5am	10/08 5am
County	FL	Gilchrist	10/08 5pm	10/08 5pm	10/08 5pm	10/08 5pm	10/08 5pm
County	FL	Jefferson	10/08 5pm	10/08 5pm	10/08 5pm	10/08 5pm	10/08 5pm
County	FL	Hamilton	10/08 5pm	10/08 5pm	10/08 5pm	10/08 5pm	10/08 5pm
County	FL	Holmes	10/08 7am	10/08 7am	10/08 7am	10/08 7am	10/08 7am
County	FL	Jackson	10/08 8am	10/08 8am	10/08 8am	10/08 8am	10/08 8am
County	FL	Jefferson	10/08 11am	10/08 11am	10/08 11am	10/08 11am	10/08 11am
County	FL	Lafayette	10/08 9am	10/08 9am	10/08 9am	10/08 9am	10/08 9am
County	FL	Liberty	10/08 5am	10/08 5am	10/08 5am	10/08 5am	10/08 5am
County	FL	Madison	10/08 5pm	10/08 5pm	10/08 5pm	10/08 5pm	10/08 5pm
County	FL	Marion	10/08 5am	10/08 5am	10/08 5am	10/08 5am	10/08 5am
County	FL	Monroe	10/08 5am	10/08 5am	10/08 5am	10/08 5am	10/08 5am
County	FL	Polk	10/08 5am	10/08 5am	10/08 5am	10/08 5am	10/08 5am
County	FL	Putnam	10/08 5am	10/08 5am	10/08 5am	10/08 5am	10/08 5am
County	FL	St. Johns	10/08 5am	10/08 5am	10/08 5am	10/08 5am	10/08 5am
County	FL	St. Leon	10/08 5am	10/08 5am	10/08 5am	10/08 5am	10/08 5am
County	FL	Volusia	10/08 5am	10/08 5am	10/08 5am	10/08 5am	10/08 5am

## HURREVAC QUICK GUIDE



Setting your Base location, by either right clicking on the desired area on the map or selecting the Home Icon from the Storm Tools will allow the user to view and adjust Clearance times and timing products easier.



Current weather and forecasts can be viewed by browsing through the Conditions Tab in the upper left panel. Rainfall Forecasts, River conditions and Tide observations from NOAA are being updated live and take you directly to the official website



All advisory text products from the National Hurricane Center relative to the storm you have selected are available in the middle of the Configuration and Reports ribbon on the right side of the display



You can access and layer all forecast graphics from the National Hurricane Center in the Storm Tools ribbon (above) – Watches and Warnings, the Tropical Storm Wind Arrival timing graphics, and Wind Speed Probabilities